

SMD+

A private consultancy in the built
environment and technology

SMD+

SMD+

sylvie.milo@smdplus.co.uk

+44(0)7455546346

c/o Very Ard Times Ltd Tower 42

25 Old Broad Street

London

EC2N 1HQ

United Kingdom

smdplus.co.uk

Forward



SMD+ is a private UK consultancy practice in the built environment and technology sector that offers a wide range of services which helps and support your projects globally.

I established SMD+ after 15 years of experience in the field of architecture, engineering, consultancy and property development across UK, Europe, Middle East, Asia and Australia.

This book is about services we provide. It emphasises some of projects and collaborations we have been worked on.

Sylvie Milosevic
Founder & Director
MArch, MSc, MIET, MIScT

Contents

The content of this book is structured around types of services provided to clients.

- 8 **About Us**
- 12 **Technical Advisory**
- 18 **Strategy**
- 24 **Emergent Technology and Research**
- 30 **Company Partner**



About us



About Us





SMD+ is celebrating 3 years in business since the company was established in London in 2016.


We worked on various projects for Clients from high-end residential, Hotel to Major International Sports and Entertainment projects for the UK and EMEA Market.



PROJECTS WORLDWIDE

 Office
London, UK

 SMD+ Global
Projects

 Previous Projects
Experience



■ Residential ■ Sports & Leisure ■ Retail



■ UK ■ France ■ United States ■ Russia ■ Middle East



■ Technical Advisory ■ Emergent Technology & Research
■ Place Making ■ Business Integration & Development





Technical Advisory



Technical Advisory



Technical advisory is a service that provides support assistance and monitoring role on behalf of a client on an existing project that requires a 3rd party review.

Our experts possess a large experience in architecture and other related multi-discipline in the built environment.



Design Peer Review



Design Peer Review assists and helps designers, architects, clients at all stages of the project to review and evaluate their own design development.

Our large range of experiences in architectural projects and urban development in the UK and internationally provide a world-class support and a valuable asset of knowledge.

We believe that Design Peer Review is essential for complex projects with high technical requirements. It either reinforces the design or provides alternative routes for project improvement.

Project

Mandarin Oriental Hotel

Architect & Engineer

Purcell /AECOM.

Client

VINCI Construction

Services

Technical Advisory Service provided by SMD+ at the preconstruction stage.

Left & Right

Mandarin Oriental Hotel London.



Technical Review



Technical reviews are carried out by our experts representing each of their discipline and areas of the project which require a third-party assistance to evaluate and solve a technical problem.

The technical review helps and assists clients during the life cycle of the project to control and minimise the risk of the complex development.

Project

Central Bank of Ireland

Architect & Engineer

Henry J Lyons Architects /AECOM.

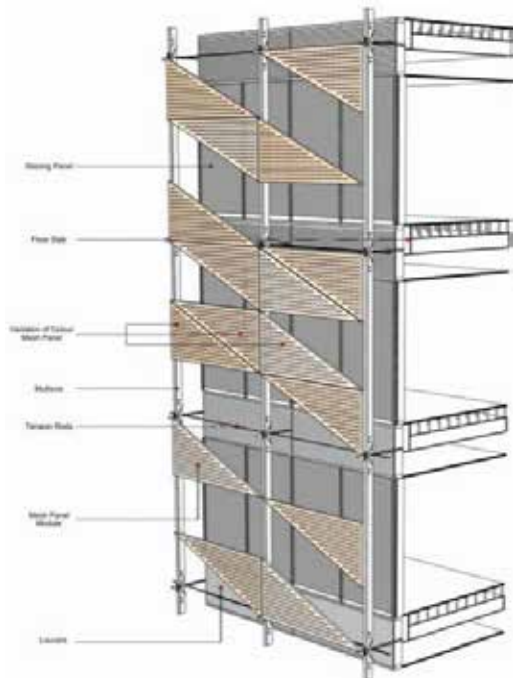
Right

Central Bank of Ireland
Completed

Left

Facade Detail designed
by Sylvie Milosevic

A project developed by AECOM and executed by Sylvie Milosevic in collaboration with a wider architectural team with engineers and contractors involve on the project during her time at AECOM.



Feasibility Report



Feasibility Report investigates, reviews and evaluates the potentials of the development proposal.

We recognise the Feasibility Report as a very useful guiding tool in the process of design development at early stage, and we produce a document that can guide the clients through the next stages of their project.





Strategy



Project Management

We provide a world-class support on the most challenging project at all stages.



Managing the program and minimising risk is our constant goal without undermining the quality of the development.



Project

Major International Sport and Entertainment project

Client

EGIS Group

Services

SMD+ is collaborating with EGIS Group on Major International Sport and Entertainment project.

It is an amazing opportunity for our practice to contribute on providing our knowledge and experience in the field of Sports to Egis Group. Our consultancy will provide project management support services to EGIS in Sports.

Above

Image courtesy of Egis Group

Business Integration and Development



Business Integration and development is a bespoke and tailored process for clients who wish to analyse and enter a specific market or a region.

We offer an assistance on curating and shortlisting consultants, contractors, suppliers and other disciplines related to the built environment on behalf of the client at each stage of the project.



Attending MIPIM Conference



Participating at the launch event with the Mayor of London



At breakfast event talk on external engagement and strategy with Airbus



Invited at the Serbian Embassy which welcome 200 guests on the Statehood Day with H.E Mrs Aleksandra Joksimović



Project
Rio Olympic Game

Architect & Engineer
AECOM.

Right & Above
Rio Olympic Game 2016

A project developed by AECOM and executed by Sylvie Milosevic in collaboration with a wider architectural team with engineers and contractors involve on the project during her time at AECOM.



Place Making

Placemaking is the creation of the added value and competitive distinction of the land and property through the production of social, cultural, and historical identities. In addition to architectural design, they rise the public interest for and emotional bonds to a specific place.

Our placemaking service includes analysis of space, urban environment, history of local communities, architectural heritage and cultural and social trends. We also estimate the social trends and placemaking trajectories for the specific cases, and then intersect them with plans for future development.

In accordance with this analysis, we evaluate the design projects and estimate the effectiveness of possible placemaking processes such as programmes for social inclusion, events, and place branding promotions.



Emergent Technology and Research



Emergent Technology and Research

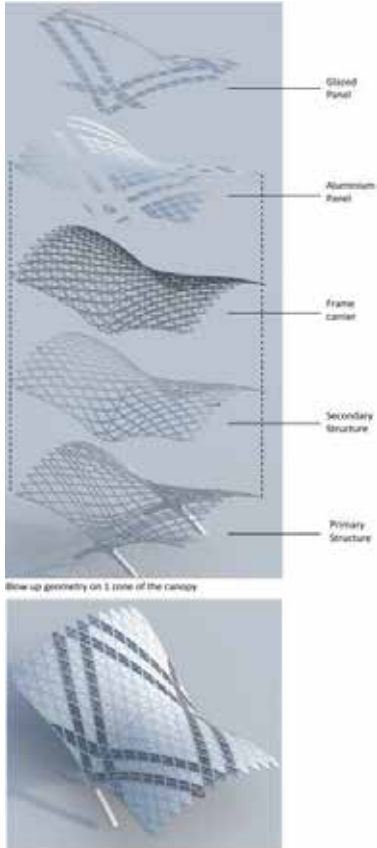
Emergent Technology and Research provide computational design assistance to designers, architects and clients on projects in the built environment.

Our approach is based on the knowledge and expertise accumulated in computational science, architectural design and engineering field.

This service aims to support many designers and clients in developing an innovative but also a technical solution for their challenging projects.



Parametric Modelling



Parametric Modelling utilize computational design as a system to develop a paradigm where the relationship between elements is used to manipulate and inform the design of complex geometries and structures.

Computer technology has provided to designers and architects with the necessary tools to analyse and simulate complex building shapes and urban organizational patterns.

We offer a bespoke solution to designers and architects on their projects at all stage of development.

Project

Riyahd Metro Station

Architect & Engineer

AECOM.

Left

Riyadh Metro Station

Above

Canopy blow up geometry designed by Sylvie Milosevic

A project developed by AECOM and executed by Sylvie Milosevic in collaboration with a wider architectural team with engineers and contractors involve on the project during her time at AECOM.

Facades and Building Envelope

The interface between the external environment and internal space of a building is defined as the facade envelope system. Facade and Building Envelope offer services to designers and architects to develop their most ambitious ideas into a digital model.

Also, we would provide assistance in optimising the geometry using advanced modelling technique, defining the material system, procuring suppliers and facade contractors on behalf of the client.



Biomimicry Design

Biomimicry design finds the solution of sustainability approach into nature itself, not by duplicating the natural forms, but by analysis the behaviour and understanding the rules governing them.

It is a multidisciplinary collaboration which combines biology, engineering, architecture and technology.

This service helps designers and architects to develop complex design development with a sustainable strategy.

Project

Al Bahr Twin Tower
Abu Dhabi Investment Council.

Architect & Engineer

Aedas, ARUP.

Left

Al Bahr Twin Tower

Right

Kinetic Façade Detail

The first full responsive kinetic façade system. Priced for 21-century innovation in skyscraper technology for Cityscape in 2010 Abu Dhabi Award for Distinction in Architecture in the Emerging Market.

A project developed by Aedas executed by Sylvie Milosevic in collaboration with a wider architectural team with engineers and contractors involved on the project during her time at Aedas







Company Partner

In partnership with
BDO



BDO - 5TH ACCOUNTING AND BUSINESS ADVICE GROUP

BDO INTERNATIONAL
US\$9 billion 2018 REVENUE
 A YEAR ON YEAR INCREASE OF 8.3%

162 Countries
1,600 Offices
80,000 Staff

BDO UK
17 LOCATIONS
350 PARTNERS
4,600 STAFF

97% OF OUR CLIENTS WOULD RECOMMEND US

2017/2018 RESULTS:
 REVENUES UP 8.5% TO **£464m**

MERGED FIRM REVENUES **£590m** estimated

1. Client Learning Programme (December 2018 - Q1 2019)
 2. Client Revenue for FY17/18

IDEAS | PEOPLE | TRUST **BDO**

Claim your due in R&D tax relief

Could your business benefit from a reduced tax bill or cash refund from the government? If you are not already claiming Research and Development (R&D) tax relief, perhaps you should be. You may be surprised as to what is classified as R&D.

Our Innovation and Technology Team

We are a team composed of 40- 50 engineers, who has delivered over £500 million of Tax Savings to Business Owners, with 100% success record. We have operated since inception of the R&D Tax Relief scheme in the UK in 2000 and assist many SMEs and Large Companies with their R&D Tax Credit across all industry sectors.

Why is BDO the right firm of advisers for my business?

- A partner-led service:

in this way, we make sure that the greatest knowledge, experience and insight is applied to every R&D tax relief claim.

- Our large specialist R&D team:

we have between 30 and 40 engineers/scientists in house and full time, ensuring we have the resources to pursue claims thoroughly and efficiently. Our team blends tax, engineering and technology expertise so that we can identify qualifying expenditure correctly.

- Strong track record:

through our work, in excess of £500 million in tax credits and refunds has been successfully delivered to clients across numerous business sectors.

- 100% success rate:

not a single R&D tax relief claim we have made has ever failed.

- We ensure clients only claim the relief to which they are entitled, avoiding extensive and disruptive investigation from HMRC.

- Ability to build long-lasting client relationships:

95% of businesses we advise on R&D tax relief claims renew their contracts with us.

- Our full claim management service:

we handle the paperwork, enabling you to remain focused on running your business. We provide effective documentation to meet all compliance requirements.

Is your business eligible for R&D tax relief?

Any company that is involved in technological or scientific problem solving could be eligible for R&D Tax Relief. This can include architects, software developers, manufacturing, engineering, construction or even demolition companies.

If you can answer yes to any of the following questions you may qualify for R&D Tax Relief, please contact us for more details.

- Have you performed any form of technical or scientific problem solving?
- Are you using existing processes/methods/techniques in a unique way?
- Have you abandoned a project for technical reasons?

SMD+

sylvie.milo@smdplus.co.uk

+44(0)7455546346

c/o Very Ard Times Ltd Tower 42

25 Old Broad Street

London

EC2N 1HQ

United Kingdom

smdplus.co.uk